

## SPECIFICATION SHEET

**Product Name: Ses i 1**

**Catalog # SI01-A37A**

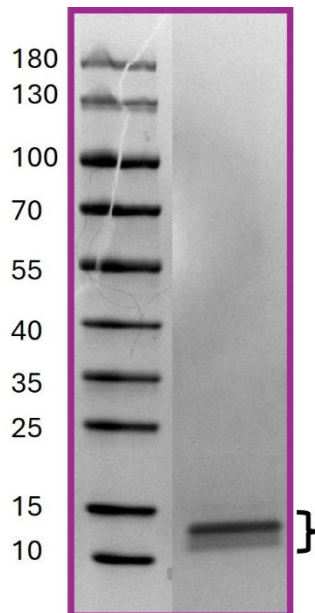
**Product Description:** Native Sesamum indicum (*Sesame*) allergen. **Storage and Stability:** Store at -20°C. To avoid repeated handling and multiple freeze/thaw cycles aliquot diluted product into smaller quantities.

**Data for a Sample Lot:**

**Alternate Names** : 2S albumin  
**Source** : Sesamum indicum (*Sesame*)  
**Accession Numbers** : Genbank: [AF240005](https://www.ncbi.nlm.nih.gov/nuclot/AF240005)  
**Host** : Native protein  
**Formulation** : Native protein stored in 1X PBS, pH7.5 solution  
**Molecular weight** : ~14 kDa

**Purity** : The purity was determined to be ≥90% by densitometry

**Gel Image**



**References**

1. Wolff N. et al. Allergy to sesame in humans is associated primarily with IgE antibody to a 14 kDa 2S albumin precursor. Food and Chemical Toxicology 41(2003) 1165-1174.
2. Maruyama. N., et al. Measurement of specific IgE antibodies to Ses i 1 improves the diagnosis of sesame allergy. Clinical & Experimental Allergy, 46, 163-171.